

# CHARITY HOUSIE



# CHARITY HOUSIE



## February Promotions

Come join us at Wenty Leagues for these promotions in February.

**MAXI HOUSIE**  
**\$150 CASH GAMES**  
**Monday 22 February**

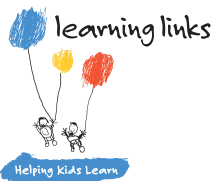
\$20 to play  
25 Cash games,  
BSG Rewards,  
Bonus sheet & Jackpot sheet  
**EYES DOWN 11AM**

**MONSTER HOUSIE**  
**\$150++ CASH GAMES**  
**Friday 26 February**

\$39 to play  
25 Cash games, BSG Rewards,  
10 Page Progressive  
Jackpot book  
**EYES DOWN 7.30PM**

**BINGO  
PETS  
AVAILABLE\***

Bring a  
friend and  
join the  
fun!



Proceeds from Charity Housie  
support children with  
learning difficulties.



[WWW.CHARITYHOUSIE.ORG.AU](http://WWW.CHARITYHOUSIE.ORG.AU)

\*Minimum spend may apply to PET purchases. All prizes subject to ticket sales. CFN 13232.  
Think! About your choices. Call Gambling Help 1800 858 858 [www.gamblinghelp.nsw.gov.au](http://www.gamblinghelp.nsw.gov.au)  
Wenty Leagues, 50 Smith St, Wentworthville NSW 2145 | (02) 8868 9200 | [wentyleagues.com.au](http://wentyleagues.com.au)



## February Promotions

Come join us at Wenty Leagues for these promotions in February.

**MAXI HOUSIE**  
**\$150 CASH GAMES**  
**Monday 22 February**

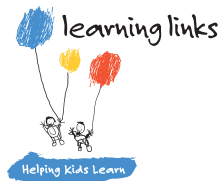
\$20 to play  
25 Cash games,  
BSG Rewards,  
Bonus sheet & Jackpot sheet  
**EYES DOWN 11AM**

**MONSTER HOUSIE**  
**\$150++ CASH GAMES**  
**Friday 26 February**

\$39 to play  
25 Cash games, BSG Rewards,  
10 Page Progressive  
Jackpot book  
**EYES DOWN 7.30PM**

**BINGO  
PETS  
AVAILABLE\***

Bring a  
friend and  
join the  
fun!



Proceeds from Charity Housie  
support children with  
learning difficulties.



[WWW.CHARITYHOUSIE.ORG.AU](http://WWW.CHARITYHOUSIE.ORG.AU)

\*Minimum spend may apply to PET purchases. All prizes subject to ticket sales. CFN 13232.  
Think! About your choices. Call Gambling Help 1800 858 858 [www.gamblinghelp.nsw.gov.au](http://www.gamblinghelp.nsw.gov.au)  
Wenty Leagues, 50 Smith St, Wentworthville NSW 2145 | (02) 8868 9200 | [wentyleagues.com.au](http://wentyleagues.com.au)